



# MAGNUS

*Moved By Innovation™*



The **Jilson** Group



**CASTER-PRO®**



CASTERS | GAS SPRINGS | LEVELERS | BEARINGS | CLIPS & TIES | SHEARS | ACCESSORIES | SOLUTIONS

# Who Is Magnus?

The Magnus network of companies provides specialized and standard motion control and industrial hardware solutions including casters, wheels, levelers, gas springs, bearings, clips and ties, shears and related accessories. Magnus serves design engineers seeking motion control solutions that meet exacting performance, budget and deadline goals, and purchasing professionals looking for price-competitive motion control components. Magnus provides motion control and industrial hardware solutions with a level of formalized quality unrivaled in the industry; an innovative approach that enables us to offer superior, resourceful solutions; and personal, relationship-based service.



## Formalized Quality

Magnus is **ISO 9001:2000** certified, providing customers with the highest standardized levels of process and product quality, staff expertise, and business integrity.



## Innovation

Magnus leverages long-standing partnerships, supply chain information systems, and engineering expertise to craft comprehensive motion control solutions that offer the best combination of performance and price.



## Service

Magnus fosters relationships based on unparalleled support provided in a timely, friendly and courteous manner.

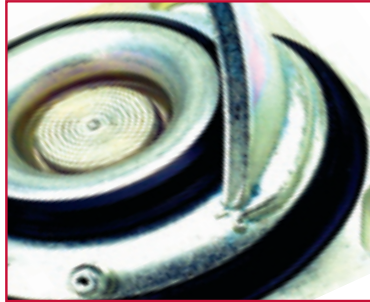
## When design and quality matter.

Over the past decade, mass manufacturing and price competition have relegated the perception of many products to that of a commodity item, differentiable only by price. At the same time, the need for more capable motion control devices has continued to grow. Across industries such as business machines, food service, healthcare and retail point of purchase merchandisers, motion control solutions must not only be affordable, they must also meet and exceed increasingly rigorous performance requirements. Design engineers and purchasing professionals alike are confronted with the challenge of finding solutions that perform to spec, and with the lowest total cost of acquisition and ownership. In a marketplace inundated with hundreds of manufacturers, suppliers and distributors, finding a proven, experienced partner can be daunting.

The need for a single-source solution provider that can meet the evolving and diverse needs of these industries is clear. The Magnus network of companies offers a peerless level of experience, design savvy and a pervasive dedication to quality. This enables us to deliver solutions of incomparable integrity, performance and value. When design and quality matter, Magnus should be your first and only call.

# Formalized Quality

Many companies profess a dedication to quality, but few pursue it as obsessively as Magnus. Our commitment is to offering products that are reliable, durable and deliver superior total cost of ownership. Magnus' ISO 9001:2000 certification is verifiable proof that quality pervades the organization from top to bottom.



## What does ISO 9001:2000 mean to you?

The ISO 9001:2000 standard is designed to evaluate each process affecting quality, beginning with initial contracts received from customers to packaging and delivery of finished products. The intent of this standard is to provide a universal baseline for quality management which can be used by companies around the world.

The main focus of ISO 9001:2000 is customer satisfaction. The elements in the standard ensure that the company:

1. Standardizes, organizes, and controls operations
2. Provides for consistent dissemination of information
3. Improves various aspects of the business based on statistical data and analysis
4. Enhances customer responsiveness to products and service
5. Encourages process improvement

The result is that a certified company such as Magnus Mobility Systems, Inc., has met a predefined set of quality standards, and therefore can provide a higher level of customer satisfaction to their customers.

*Magnus Mobility Systems, Inc. is audited annually by one of the most demanding international auditing firms, Det Norske Veritas. The audit ensures that our company has successfully undergone a comprehensive, rigorous assessment of our processes and our organization meets defined standards of quality. It also certifies that our systems have been adequately defined and corrective action systems are fully developed and functional, which reduces the need for costly conformance inspections.*

*Magnus Mobility Systems, Inc., through our registrar, Det Norske Veritas, is certified to ISO 9001:2000 (Certificate CERT-8355-2003-AQ-HOU-RAB).*

# Innovation

From its beginnings in 1978, Magnus has always pursued a better way. From its early days spent concentrating on casters and wheels, Magnus has diversified its product offering to include a wide range of components. This broad product line has enabled us to evolve to a comprehensive, single-source solution provider. Whenever motion control is concerned, Magnus has a solution to offer.

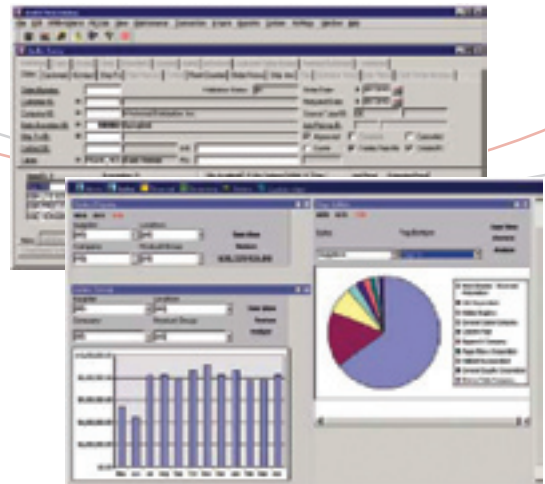
## Greater resources means increased resourcefulness.

The Magnus network of companies is a collaborative infrastructure that produces results greater than the sum of its parts. Drawing upon a cumulative knowledge base and experience level that far exceeds that of any other company in the industry, our solutions are built better from the ground up. With professionals well-versed in the intricacies of virtually every application, every vertical industry, we are able to craft solutions with a unique eye for detail and a keen focus on protecting your investment.

Solid strategic partnerships enable Magnus to compile solutions from component providers inside and outside of our network. The most durable wheel, the most suitable bearing, the right-priced leveler — whatever the need — Magnus can craft a solution that other companies just can't replicate.

## Strategic supply chain management offers you the world.

The challenges of competing in a global marketplace can often be overwhelming. With Magnus on your side, you can utilize our proven supply chain management practices to: 1) develop and execute world-class strategic sourcing programs; 2) identify and manage low-cost, high-quality sources in the emerging regions of the world (in particular China, India and Eastern Europe); 3) improve overall business processes. Magnus can actively craft strategies to ensure you are procuring in the most efficient and rewarding way.



## Putting technology to work for you.

Information is the lifeblood of any organization. Better access to information facilitates more informed decisions and greater responsiveness. Magnus' Customer Relationship Management software affords our customers visibility into order status and inventory availability, enabling simplified purchasing and communication. This robust intelligence tool delivers real-time information and an ever-present link to Magnus and your account.

*Magnus' commitment to innovation is manifested in the deployment of our new Customer Management tool. Always at the forefront of customer service, Magnus uses this online tool to enable you to track orders, place new ones, and find a wealth of logistical intelligence.*

*Once you find the product information you require on our Web site, log in to the Online Ordering tool and place your order. It's available day or night, at your convenience.*

# Service



Magnus has reached the top of its game by providing superior solutions based on sound design and engineering expertise, and through its steadfast commitment to customer satisfaction. From every phone call answered to each package shipped, customer service pervades the organization. Partnerships are grounded in trust, and are nourished by commitment. Every day is another opportunity to prove that dedication to you.

## The performance you count on, the courtesy you deserve.

At Magnus, your deadlines are our deadlines. Your budgets are our budgets. Our track record of timeliness and constant process improvements reflect our unwavering focus on inventory management, shipping timeliness, and order accuracy.

While the consistent, reliable nature of our performance may evoke images of an ultra-precise machine, the friendly voice you'll hear on the other end of your phone will remind you that you're dealing with some of the most personable staff in the industry.

Our staff includes engineers and technical sales representatives who are the most informed, helpful professionals you'll encounter. Always available for insightful advice, they will help you make reasoned

purchase decisions or simply give you guidance even if you're not ready to buy. Customer support representatives put your satisfaction first and are happy to assist you with any requests you may have. You'll quickly understand why Magnus customers are customers for the long term.

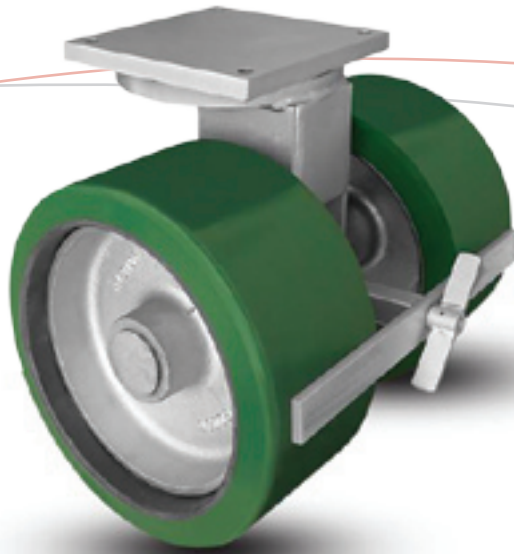


# Casters and Accessories



## Casters make the world go round.

If there's a device that needs to move, chances are The Magnus Companies can spec a caster solution to satisfy the need. If your primary concern is weight capacity, resistance to extreme conditions, durability, aesthetics, or a combination of any of these, Magnus offers a huge selection of existing models to meet that need. Or we can draw upon our unrivaled design experience to customize a solution specific to your needs and application.



## Magnus casters are at work in every industry.

Business machines, medical and laboratory devices, food service apparatus, heavy duty and shop equipment casters — Magnus has been developing motion control solutions for these industries for more than 30 years. Every solution is backed by our hallmark quality, reliability and application-specific performance.



# Casters and Accessories

The best combination of form and function.



The Magnus network of companies offers caster and wheel solutions designed to meet the most exacting performance requirements. They also do it in style. For applications that require specific aesthetics, Magnus offers a wide range of colors and finishes to make sure your products look their best. European-styled casters can add that unique flair to set your product design apart.



Accessories round out your caster solution.

We could hardly claim to be a turnkey solution provider if we forgot the details. Magnus provides all varieties of parts and options to complete your solution, including brackets, sockets, axles, spanners and washers. We offer our unique Kwik Klips® which enable you to remove or change casters fast. Swivel locks, floor truck locks, brakes, grease seals, thread guards, bumpers...we supply them all. Don't know what you need? Don't worry, we'll help pick the accessories you need to keep your solution moving.



# Gas Springs

Gas springs are the cost-effective answer to positioning moving parts. Gas springs improve the performance and ergonomic character of a device, while enhancing safety through controlled opening and closing speeds. Designed to last the lifetime of most products, gas springs are self-contained, clean and maintenance-free. Put them to work in a variety of environments and applications, including food processing equipment, automotive, medical and diagnostic apparatus, fitness equipment and business machinery.



# Levelers

Levelers are the proven solution to level the playing field for devices large and small. From peripherals and test devices, to mainframes and large industrial equipment, there is a solution for every weight and size requirement.



Levelers are comprised of bases and stems. Both are available in nylon, steel and stainless models. Depending on an environment's particular characteristics, non-skid and anti-vibration options can be applied. A broad range of base diameters puts all equipment on solid footing. Nearly any stem size is available for superior height control.



# Bearings

The Magnus Companies offer the highest quality bearings and housings, either from our extensive in-stock inventory or from our ability to custom fabricate to exact specifications — in quantities from one to millions. With literally thousands of standard and non-standard parts available — in both inch and metric sizes — you'll enjoy quicker delivery and less downtime for your equipment.



## Not all bearings are created equal.

It takes tough bearings to withstand a wet, corrosive environment. Our non-corrosive bearings are lightweight and will go where no conventional bearing can. Available from stock or engineered using special materials, our bearings are matched to the application to keep your equipment running at optimal performance.

Our plastic bearings are self-lubricating requiring little, if any maintenance. Whether you need a solution for those hard-to-reach areas that are inaccessible for lubrication, or for applications that must be free of contamination, such as food processing, these bearings are a great solution.

We also offer both full Ceramic and Ceramic Hybrid bearings. They offer the ability to combat a wide spectrum of factors including, but not exclusively; excessive speeds, the need for lubrication, excessive heat, frictional heat, liquid corrosion, and chemical abrasiveness. These are also available in both inch and metric sizes.



# Clips & Ties

Fast to close, easy to release, QuickKlips® from the Jilson Group are perfect for production, laboratory and food applications where bags are frequently opened and closed. Sizes ranging from 4 inches to 16 1/2 inches long can be custom imprinted and color matched to your needs.



For greater strength and resiliency, arrow ties are ideal for everything from tying small bags to bundling heavy wires and cables. They also provide excellent resistance to weathering, making them suitable for outdoor applications.

# Shears

QuikSnip heavy duty, industrial quality shears cut sheet metal and other materials cleanly and accurately. They do it without distorting or curling the edges of the cut, and without damaging painted, plated, anodized or polished surfaces.



QuikSnip's unique design permits high mechanical forces to be transmitted to the cutting jaw, greatly reducing cutting effort. Straight or curved cuts can be made with ease. And interior cuts can be made by first drilling a 1/4" hole to accommodate the cutting blade. Choose from several models to match your job.

# International Network

Magnus combines the best of single-source convenience with the benefits of a global network. Through deliberate growth and geographic diversification, Magnus offers international reach to customers from the Pacific Rim to Europe. Strategic distribution and service centers enable Magnus to provide timely delivery of the products you need, and the regional customer service upon which you rely.

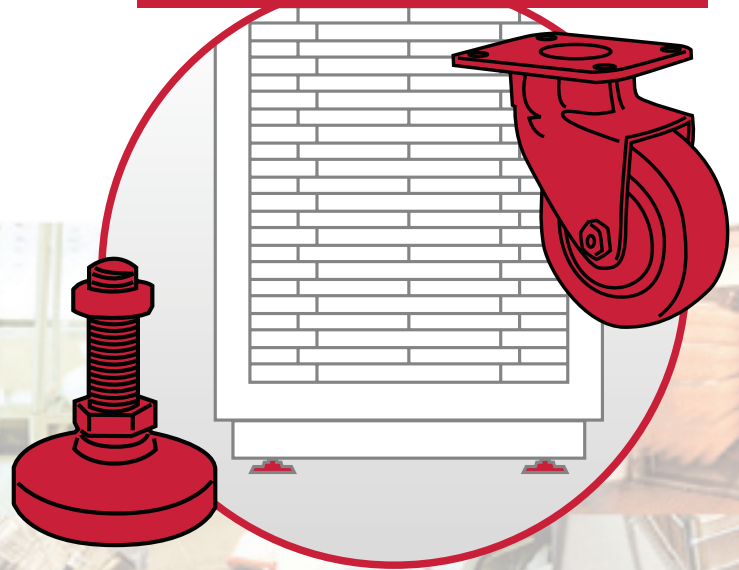


# Motion Control Solutions

We supply casters, wheels, bearings, levelers, gas springs and clips for every major industry. If you have a specialized need one of our representatives will be happy to help find the solution.

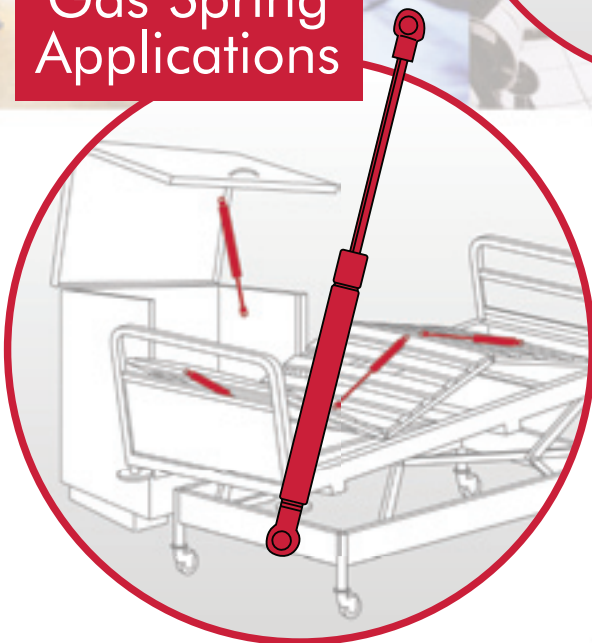
## Electronic Enclosures

## Medical Machines

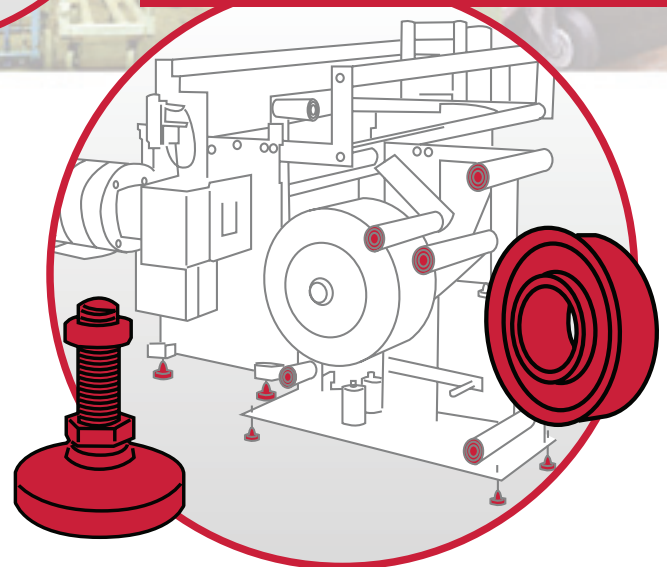


- Casters
- Wheels
- Bearings
- Levelers
- Gas Springs
- Clips

## Gas Spring Applications



## Packaging Machines





# MAGNUS

1912 West Business Center Drive | Orange, CA 92867-7906 USA  
Phone: 1.800.858.7801 | 1.714.771.2630 | Fax: 1.714.288.7471  
[www.magnushq.com](http://www.magnushq.com)

## MAGNUS AFFILIATE COMPANIES



[www.magnusinc.com](http://www.magnusinc.com)

[www.jilson.com](http://www.jilson.com)

LOS ANGELES P: 1.800.858.7801 F: 1.714.744.0134  
P: 1.714.771.2630

NEW YORK P: 1.800.969.5400  
P: 1.973.471.2400  
F: 1.973.471.3993

CHARLOTTE P: 1.800.742.9328 F: 1.704.599.2030  
P: 1.704.599.7009